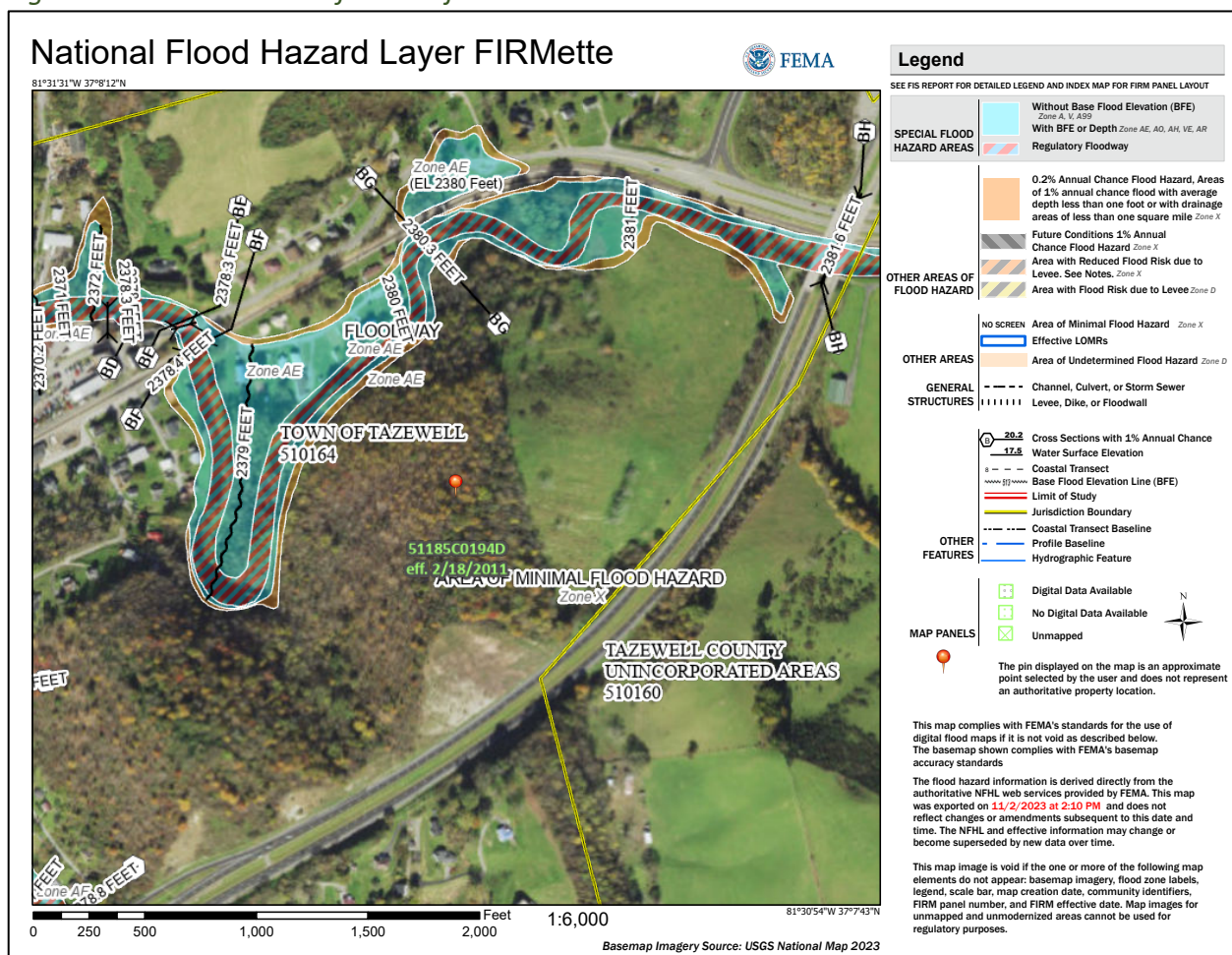


Historic Flooding Data and Hydrologic Studies

The Blacksburg Street Community at the Mill Dam in North Tazewell floods regularly. The abandoned mill building and associated dam (formerly Farm Bureau) obstructs the natural flow of the Clinch River as well as captures significant debris. Residents of North Tazewell noted that the mill building causes water to build up and contributes to the flooding of the community on Blacksburg Street. The community reports frequent flooding from multiple sides of the river including flood waters running down Blacksburg Street completely blocking access. During the 2003 flood, several members of the community had to be rescued from the church due to flooding. Most of the neighborhood is in the 100-year floodplain.

Figure 1 FEMA FIRMeTte of the Project Area



In general, Tazewell County and the Town of Tazewell have an history of persistent flooding, which can be attributed to its mountainous terrain and the presence of smaller tributaries that feed into larger streams and rivers. The topography and high-water volume increase the risk of flash flooding. Since 1953, the county has experienced 21 presidential disaster declarations, encompassing severe storms, snowstorms, hurricanes, and floods. In recent years, the Town of

Tazewell has faced specific incidents of flooding that led to damage to infrastructure, property, and disruption of daily lives of its residents.

The data in Table 1 below was pulled from the Tazewell County Flood Resilience Plan and indicates forty-two historic flood events that took place in county. The listed events were documented in the Cumberland Plateau Planning District Commission (CPPDC) Hazard Mitigation Plan, National Centers for Environmental Information (NCEI) Storm Events Database, and/or presidential disaster declarations.

Table 1. Historic Flood in Tazewell County

Occurrence	Location	Source(s)
February 22, 1862	Clinch River Area	CPPDC HMP
February 22, 1867	Clinch River Area	CPPDC HMP
June 22, 1901	Entire River	CPPDC HMP
March 1, 1902	Clinch River Area	CPPDC HMP
November 20, 1906	Clinch River Area	CPPDC HMP
June 14, 1907	Clinch River Area	CPPDC HMP
April 3, 1912	Clinch River Area	CPPDC HMP
April 1, 1913	Clinch River Area	CPPDC HMP
March 5, 1917	Lower Clinch Area	CPPDC HMP
January 29, 1918	Clinch River	CPPDC HMP
February 3, 1923	Clinch River	CPPDC HMP
June 13, 1923	Clinch River	CPPDC HMP
December 22, 1926	Clinch River Area	CPPDC HMP
August 14, 1940	Clinch River Basin	CPPDC HMP
January 30, 1957	Clinch River	CPPDC HMP
May 7, 1958	Clinch River	CPPDC HMP
March 12, 1963	Clinch River	CPPDC HMP
March 17, 1973	Clinch River Area	CPPDC HMP
January 26, 1978	Clinch River	CPPDC HMP
January 23, 2022	Wardell	NOAA/NCEI
March 18 2002	Countywide	NOAA/NCEI
February 16, 2003	Clinch River Area	CPPDC HMP
November 19, 2003	Countywide	NOAA/NCEI
February 28, 2011	McCall Place, Bandy, Adria, Richlands	NOAA/NCEI
April 26, 2012	Richlands	NOAA/NCEI
May 22, 2012	Bluefield	NOAA/NCEI

Blacksburg Street and Mill Dam Removal Study

Occurrence	Location	Source(s)
March 4, 2015	Red Ash	NOAA/NCEI
April 23, 2017	Raven	NOAA/NCEI
June 16, 2017	Bluefield	NOAA/NCEI
February 11, 2018	Richlands	NOAA/NCEI
April 16, 2018	Cedar Bluff	NOAA/NCEI
September 10, 2018	Bluefield	NOAA/NCEI
December 21, 2018	Richlands	NOAA/NCEI
February 20, 2019	Bluefield, Cedar Bluff, Pisgah, Hockman	NOAA/NCEI
February 6, 2020	Countywide	State Declared Emergency, NOAA/NCEI
April 13, 2020	Pounding Mill	NOAA/NCEI
March 1, 2021	Richlands	NOAA/NCEI
January 2, 2022	Cedar Bluff	NOAA/NCEI
May 24, 2022	Falls Mills	NOAA/NCEI
July 12, 2022	Mouth of Laurel, Jewell Ridge, and Burkes Garden	NOAA/NCEI
August 5, 2022	Richlands	NOAA/NCEI
February 17, 2023	Countywide	Local News